

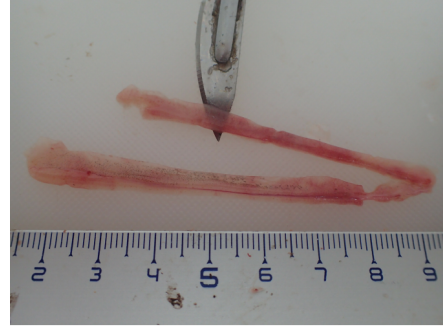
Queen snapper / *Etelis oculatus*



A - IMMATURE

TRANSPARENT TO
TRANSLUCID GONADS

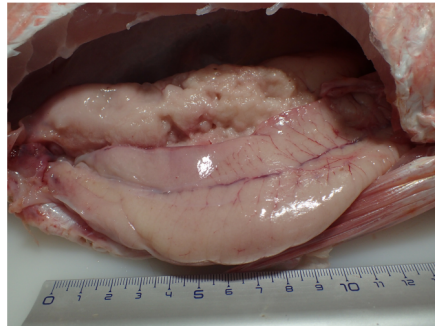
WITHOUT EGGS



B - DEVELOPING

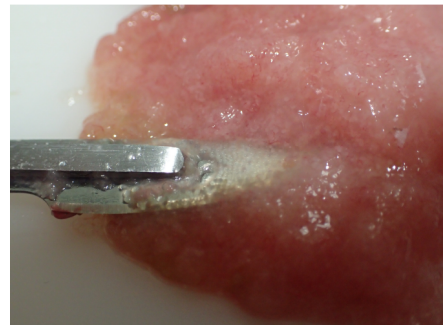
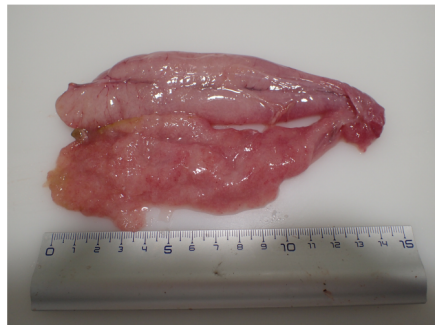
non-hydrated eggs
SOMETIMES visible

OPAQUE GONADS



C - SPAWNING

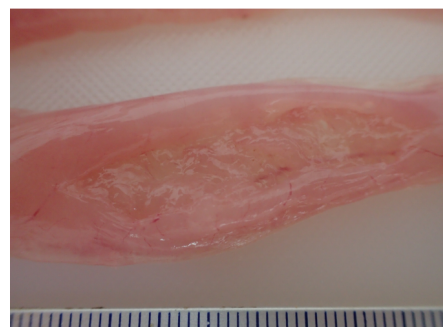
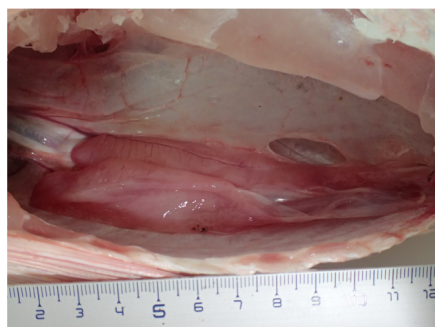
AT LEAST 1 VISIBLE
HYDRATED EGG



D - REGRESSION/REGENERATION

FEW HYDRATED
EGGS STILL PRESENT
FLABBY GONADS AND
THICK INNER LAYER

General aspect
"stunted"



Queen snapper / *Etelis oculatus*



E - OMITTED SPAWNING

UNDETERMINABLE WITH THE NAKED EYE

F - ABNORMAL

NECROSIS,
SCLEROSIS OR
INTERSEX



| Picture | Sex | Species | First maturity size |
|---------|-----|------------------------|---------------------|
| | | <i>Etelis oculatus</i> | NA |

References/Photos :

ICES (WKASMSF 2018 & WKMATCH 2012),
IFREMER,

Quéro J-C. et Vayne J-J.2008. Les poissons de mer des pêches françaises : delachaux et niestlé, 304

© J. Baudrier - Ifremer Martinique