

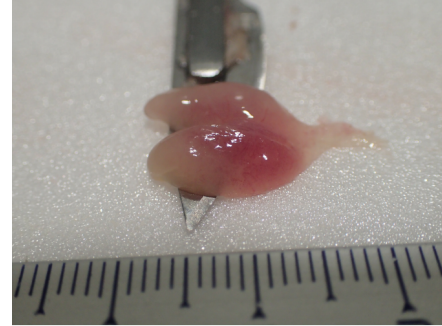
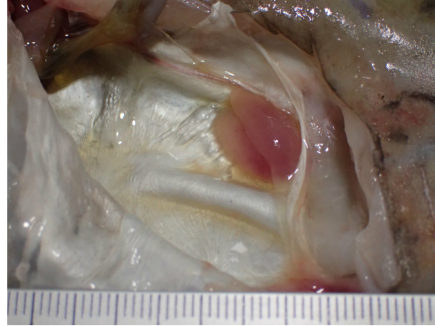
# Scribbled leatherjacket filefish / *Aluterus scriptus*



## A - IMMATURE

TRANSPARENT TO  
TRANSLUCID GONADS

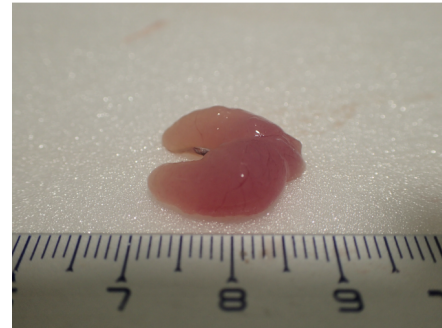
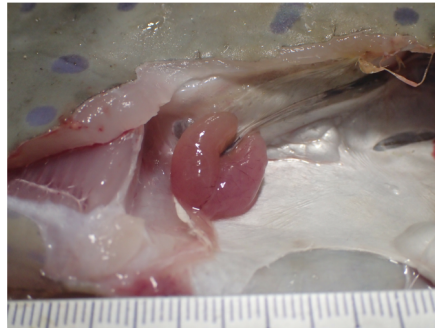
WITHOUT EGGS



## B - DEVELOPING

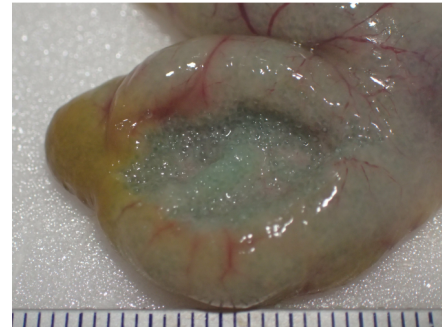
non-hydrated eggs  
SOMETIMES visible

OPAQUE GONADS



## C - SPAWNING

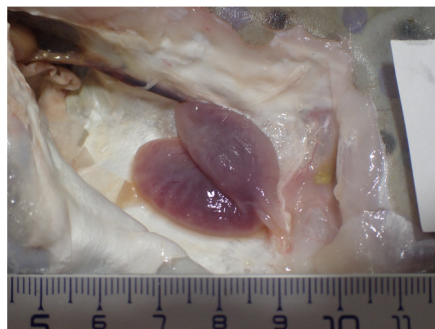
AT LEAST 1 VISIBLE  
HYDRATED EGG



## D - REGRESSION/REGENERATION

FEW HYDRATED  
EGGS STILL PRESENT  
FLABBY GONADS AND  
THICK INNER LAYER

General aspect  
"stunted"



**Scribbled leatherjacket filefish / *Aluterus scriptus***





**E - OMITTED SPAWNING**

UNDETERMINABLE WITH THE NAKED EYE

**F - ABNORMAL**

NECROSIS,  
SCLEROSIS OR  
INTERSEX



Picture	Sex	Species	First maturity size
		<i>Aluterus scriptus</i>	NA

**References/Photos :**

ICES (WKASMSF 2018 & WKMATCH 2012),  
IFREMER,

Quéro J-C. et Vayne J-J.2008. Les poissons de mer des pêches françaises : delachaux et niestlé, 304

© J. Baudrier - Ifremer Martinique